



Waterside Way

Westfield, BA3 3YG

£350,000

Vendor comments - "We were originally drawn to Waterside Way by the large garden plot, oversized garage and its proximity to local amenities. Our home for the last 10 years has been adapted from the standard 3-bedroom semi into a versatile family home. The house provides a lovely flow with spaces for entertaining, working from home and family time. With countryside walks accessible from the estate, including numerous local parks; and easy commuter routes to Bath and Bristol, this home provides the best all-rounder for any lifestyle. Though it's with a heavy heart, we're excited to pass our home on to its next chapter — ready for someone new to love it as much as we have."

Viewing

Please contact our Bath Stone Property (MSN) Office on 01761 360144

if you wish to arrange a viewing appointment for this property or require further information.

Beautifully presented
Stunning garden
Sunroom overlooking garden
Many upgrades throughout
Ample driveway parking
Near many amenities



3



1

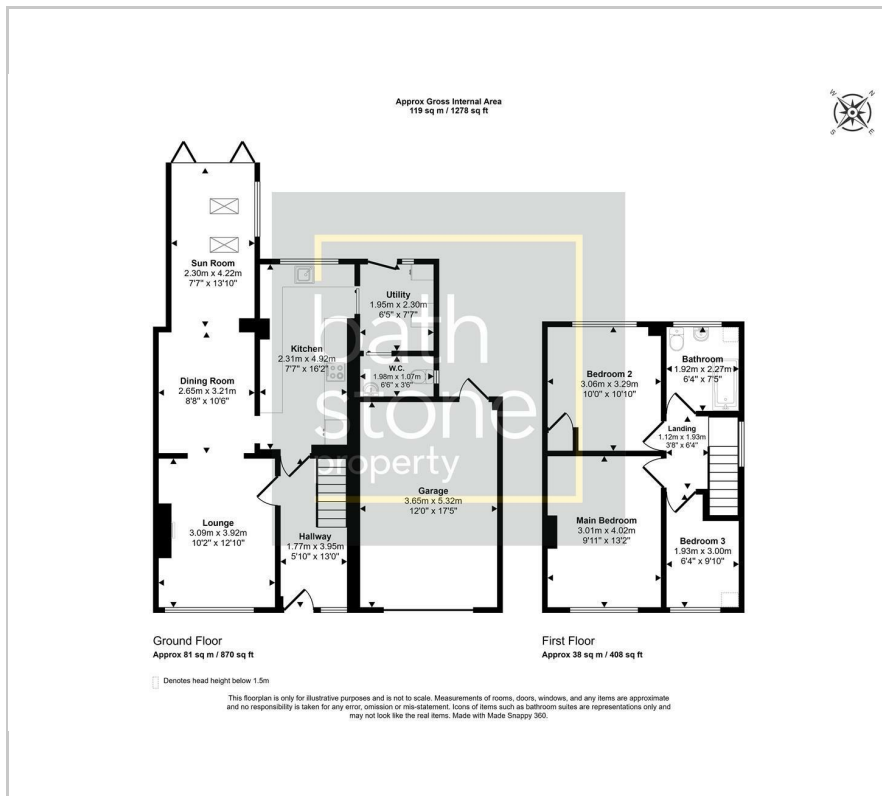


3

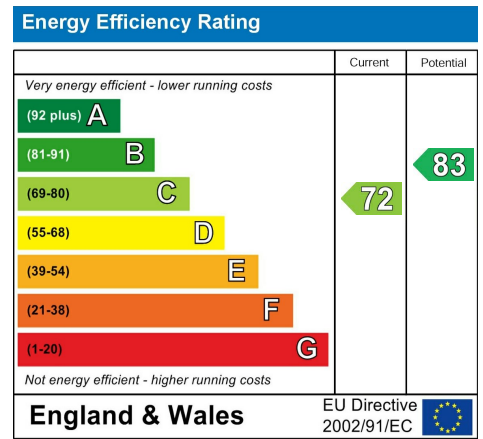


C

Floor Plan



Energy Efficiency Graph



Please give us Feedback



These particulars, whilst believed to be accurate are set out as a general outline only for guidance and do not constitute any part of an offer or contract. Intending purchasers should not rely on them as statements of representation of fact, but must satisfy themselves by inspection or otherwise as to their accuracy. No person in this firm's employment has the authority to make or give any representation or warranty in respect of the property.